

INSTRUCTIONS FOR USE

MEDITORQUE
ELITE
... by medidenta ...

ME-KIT

The **MEDITORQUE ELITE** E-type low Speed 3-pc Kit includes the following:

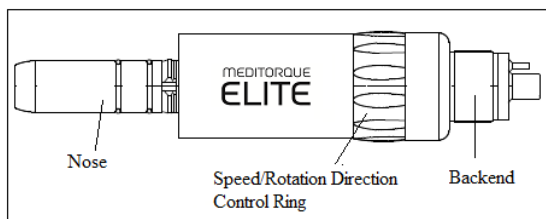
- ME-EM E-type air-motor 4-hole 1:1 transmission
- ME-EN E-type nose cone 1:1 transmission
- ME-E40L E-type Contra angle 40K rpm (latch head with sheath 1:1 transmission)
- Spray nozzle for E-type nose cone and E-type contra angle

Caution:

The **MEDITORQUE ELITE** E-type Low Speed 3-pc Kit is intended for use by or for a dental professional only. Read the operation manual before use. Follow all instructions, cautions, etc. mentioned herein. Use the **ELITE** E-type Low Speed 3-pc Kit, having in mind the safety of the patients and the operator primarily.

1. ME-EM MEDITORQUE ELITE E-type Air-motor

1-1. Parts' descriptions and Specifications



Backend configuration	Applicable to ISO standard 4-hole
Nose Configuration	Applicable to ISO standard E-type handpiece
Allowable max. speed	22,000 rpm at 36 PSI (2.46 bar) 25,000 rpm at 42 PSI (2.88 bar)
Speed ratio	1:1 transmission
Sterilization	Autoclavable at 275 degrees F.

Warning:

The air-motor must be used below 25,000 rpm. Do not run the air-motor above 25,000 rpm. Excess air-pressure and excess speed may cause malfunction or premature failure.

1-2. Installation of air-motor onto connector

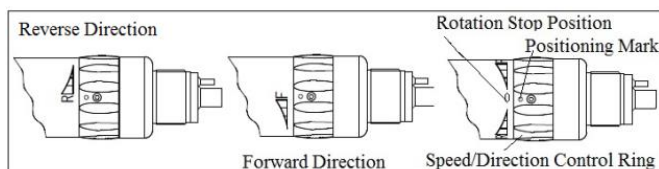
- Align the pipes of the air-motor with the corresponding holes of the tubing connector, and then tighten the nut of the tubing connector.

Caution:

Do not use the air-motor, if the air-motor cannot be installed onto the tubing connector securely. In this case, consult the Medidenta Repair Department.

1-3. Operation

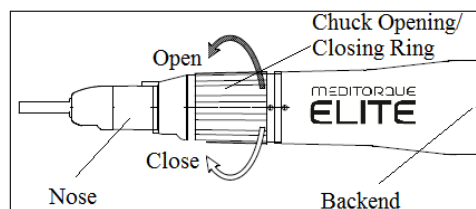
- Set the pressure gauge below 42 PSI (2.88 bar). Make a trial run to make sure that the drive-air is not leaking from between the connecting part of the air-motor and the tubing connector.
- Changes in the speed and the direction can be affected by the speed/rotation/ direction control ring.



- When the ring is turned in an F direction, the attachment installed onto the air-motor rotates clockwise. When it is turned in a R direction, the attachment rotates counterclockwise.
- The speed can be adjusted by turning the ring.
- The rotation is stopped at the center position between F and R.

2. ME-EN MEDITORQUE ELITE E-type Nose Cone

2-1. Parts' descriptions and Specifications



Backend configuration	ISO standard E-type
Nose Configuration	Doriot style (applicable to Medidenta U-style contra angles)
Allowable max. speed	40,000 rpm
Speed ratio	1:1 transmission
Sterilization	Autoclavable at 275 degrees F.

2-2. Removal/Insertion of bur from/into straight nose cone

- Twist the bur opening/closing ring in the direction indicated by the black arrow until the chuck clicks open. Remove the blank bur.
- Insert a bur spindle into the chuck all the way until it touches the back of the chuck, and then close the bur lock ring in the direction indicated by the white arrow until it clicks shuts.

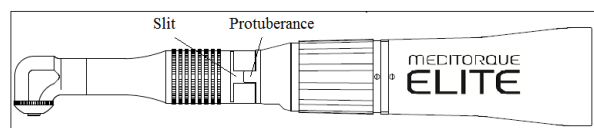
Caution:

Make sure that a bur is securely locked, pulling the bur gently with your fingers. Before use, make a trial run.

Warning:

Do not open/close the chuck without a bur. Stop using the nose cone immediately, when abnormal vibration, noise, overheating, etc. occur while the air-motor is in use. In this case, consult the Medidenta Repair Department.

2-3. Installation/installation of U-style prophyl or contra angle (attachment) onto/from nose cone



- Twist the bur opening/closing ring until the chuck clicks open. Insert the spindle of the attachment into the chuck all the way until the backend of the attachment contacts the shoulder of the nose cone, aligning the slit of the attachment with protuberance of the nose cone as indicated in the right.
- Twist the bur lock ring it clicks shut.

Caution:

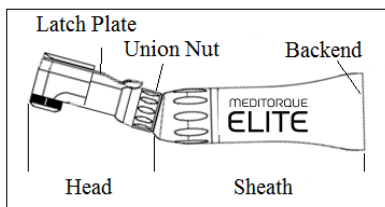
Make sure that the attachment is securely locked, pulling the sheath of the attachment gently with your fingers. Before use, make a trial run.

Warning:

Stop using the nose cone, when abnormal vibration, noise, overheating, etc. occur while the nose cone is used. In this case, consult the Medidenta Repair Department.

3. ME-E40L MEDITORQUE ELITE E-type Contra angle

3-1. Parts' descriptions and Specifications

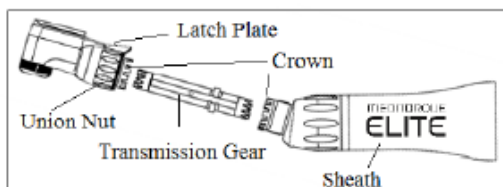


● Product names	
Head	ME-40L
Sheath	ME-E
Head with sheath	ME-E40L
Spifications	
● ME-40L head	
Allowable max. speed	40,000 rpm
Speed ratio	1:1 transmission
Backend configuration	Applicable to ISO standard 2.35 CA bur
Gear's assembly inside head	Cartridge type
Sterilization	Autoclavable at 275 degrees F.
● ME-E Contra angle sheath	
Allowable max. speed	40,000 rpm
Speed ratio	1:1 transmission
Sterilization	Autoclavable at 275 degrees F.

The head is replaceable. The following heads are available:

- ME-40L..... Latch head, pushbutton type 40K rpm
- ME-40FGP..... FG head, pushbutton type, 40K rpm

3-2. Removal/installation of head from/into sheath



Removal:

- Swing the latch plate out.
- Remove the head from sheath, turning the union nut counterclockwise.
- Pull the transmission gear out from the head.

Installation:

- Insert the transmission gear into the head. Engage the crown of the head with that of contra angle sheath, then turn the union nut.

3-3. Installation/removal of bur onto/from head

- Install the head into the sheath. Install it onto the air-motor.
- Swing the latch plate out.
- Insert a bur into chuck hole all the way until the end of bur shank touches the back of the chuck. Swing the latch plate back until it is locked with a snap at center position of the collar of the contra angle head.
- Remove the bur by following these steps in reverse order.

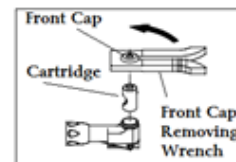
Caution: Before use, make sure that the bur is securely installed onto the head, pulling it gently with your fingers. Make a trial run.

Important: The replacement of the bur has to be executed, After the contra angle is installed onto the air-motor,

Warning: The ISO standard 2.35 CA bur must be used. Do not use a worn-out bur, as excess pressure will be applied to the chuck assembly.

3-4. Replacement of built-in cartridge

- The built-in cartridge can be replaced easily. A service kit consisting of a front cap wrench is included with purchase along with the service manual.



4. Installation/removal of nose cone and contra angle (attachment) onto/from air-motor.

Installation:

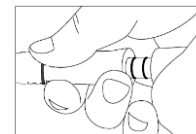
- Insert the nose of the air-motor into the backend of the attachment all the way until it is securely locked with a snap.

Removal:

- Hold the air-motor with one hand and the attachment with the other hand.
- Pull the attachment out from the air-motor.

Caution:

Do not separate the overlapped hands until the Lock is released.



4. Lubrication

Important:

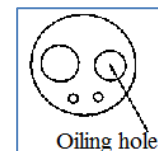
- Medidenta recommends I-Spray for lubrication. The air-motor, nose cone and contra angle handpiece must be lubricated after each use and each autoclaving.

Caution:

- Neglecting to lubricate or lack of lubricating oil may cause premature failure. This would be considered a misuse and will void the warranty.

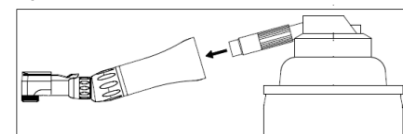
4-1. Air-motor

- Remove the straight nose cone or the contra angle handpiece from the air-motor.
- Inject the handpiece spray for a few seconds into the oiling hole (drive-air pipe) as indicated to the right.



4-2. Nose cone and contra angle

- Inject the handpiece spray for a few second into the backend of the nose cone or contra angle as indicated below:



- Use the spray nozzle provided with your purchase.
- After lubrication make a trial run.

5. Sterilization

Medidenta recommends autoclave sterilization only.

- Before sterilization, clean the surface of the air-motor, nose cone and contra angle. Lubricate them. As for the contra angle, remove the head from the sheath.
- Put them individually into a sterilization pouch.
- Autoclave them at 275 degrees F.

Warning:

Do not use dry heat sterilization. Do not use cold sterilization.

6. Warranty

Manufacturer warranties the motor for 12 months, and the contra angle and nose cone each are covered for 6 months. Warranty is subject to observance of the maintenance instructions, cautions, warning and normal use.

Note:

Medidenta and the manufacturer reserve the right to analyze and determine the cause of any failure. Warranty is void, if breakage, accident or any other issues are caused by the neglect of maintenance, cautions, warnings or any other misuse.

Manufacturing for:

MEDIDENTA

Address: 325 West Ali Baba Lane, Suite 603
Las Vegas, NV 89118

E-mail: orders@medidenta.com
Toll free #1-800-221-0750